

# 90 Garfield



## Property Details

Street Address	90 Garfield Avenue
City	New London
County	New London
Type of space	Special: Bio, Industrial: Heavy Mfg, Industrial, Special: R&D
Zipcode	06320
Site/Building Name	Sheffield Labs/Faria Ltd. LLC
Min SubDivide	1,000
Available	32,000

## Contact Information

Company	Southeastern CT Enterprise Region (seCTer)
Contact Name	Deborah Donovan
Address	190 Governor Winthrop Blvd
City	New London
State	CONNECTICUT
Phone	860-437-4659 x 202
Fax	860-437-4662
Email	<a href="mailto:ddonovan@secter.org">ddonovan@secter.org</a>
Website	<a href="http://www.secter.org">www.secter.org</a>

## Assets

100% Air Conditioned	Yes
Highest Ceiling Height	14
Cranes	No
Freezer / Refrigerated Space	No

## Building Details

Air Conditioning Office Only	Yes
Number Of Docks	2
Number Floors	2
Parking Ratio	Ample
Date Renovated	1995
Sprinkler	Yes
Sprinkler Type	Wet
Total SQFT	64000
Contiguous SQFT	16000
Manufacturing SQFT	30000
Office SQFT	2000
Sublease	0
Year Built	1920

## Transportation Access

Nearest Airport	T.F. Greene, Providence
Distance to Nearest Airport	50 miles
Distance to Commuter Rail	1 mile
Distance to Interstate	1/3 mile
Interstate Name	I-95
Port	No
Rail	Not available

## Utilities

Electric	Yes
Fiber Optics	Yes
Fuel Type	Oil
Gas	Yes
Networked	Yes
Sewer	Yes
Sewer Type	Sewer
Water	Yes
Water Type	Public

## Availability

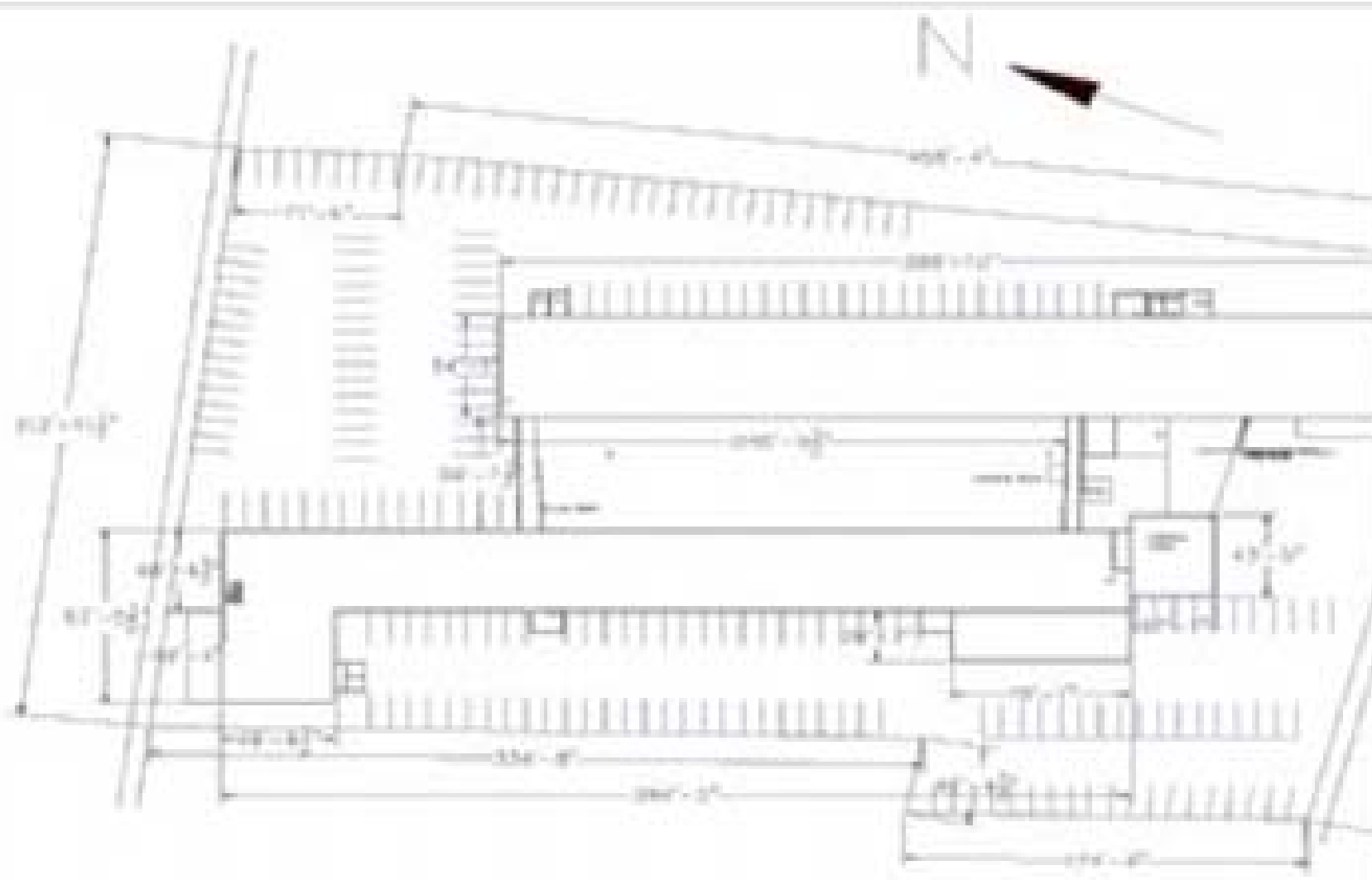
Lease Terms	Negotiable
For Lease	Yes

## Additional Information

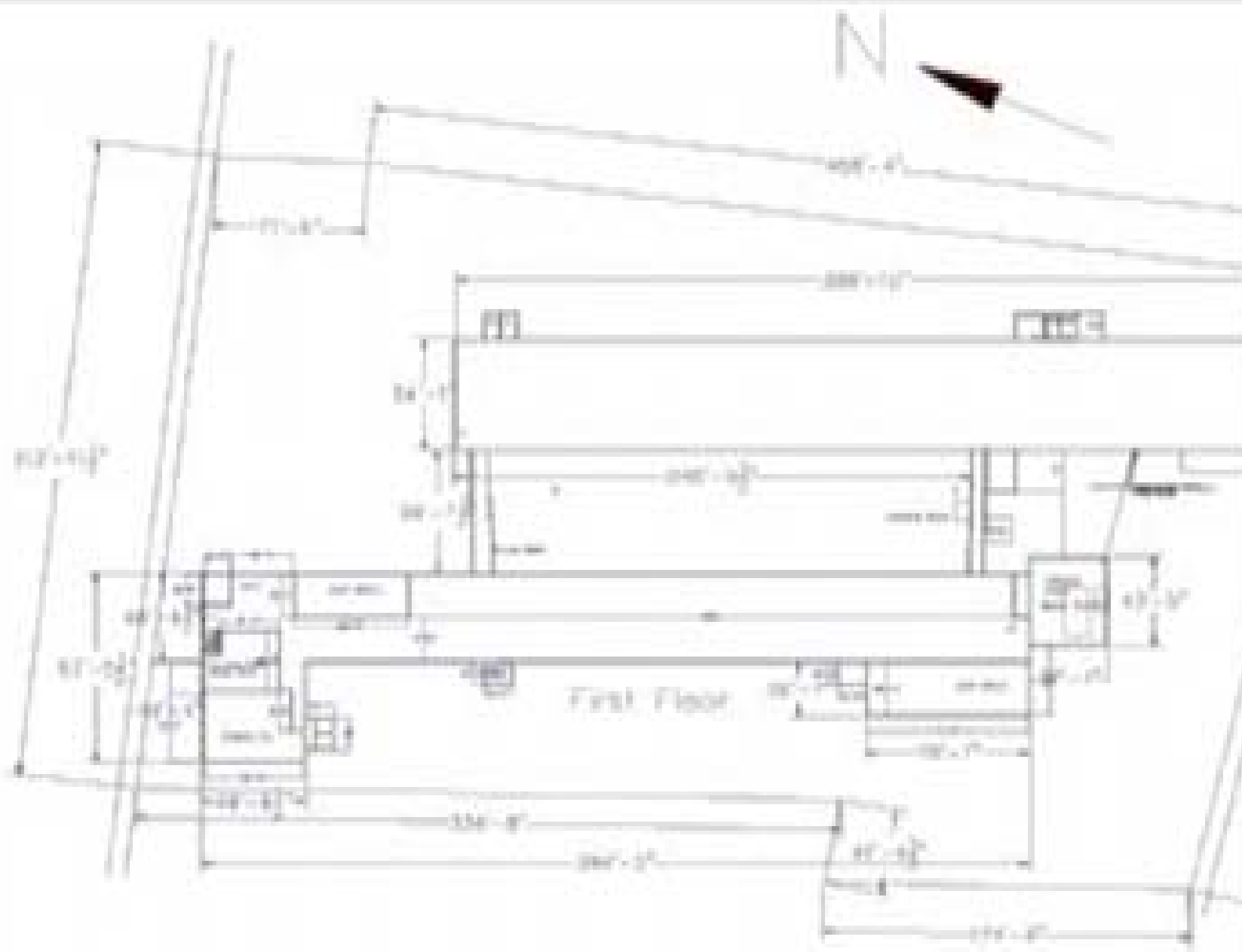
Former Name	Sheffield Labs/Faria Ltd. LLC
Targetted Community	Yes
Property Web Address	secter.org

## Notes

Leased space is available and negotiable for second floor of Manufacturing/Warehouse facility. The owner and seCTer will work with business startups, R&D companies and others interested in incubator-type space. Two freight elevators. Loading docks, ample parking. Easy access to I-95. Owner occupies first floor, will consider all suitable uses on second floor, and will divide space for appropriate tenants. Great space for small manufacturing, distribution, warehousing companies, and R&D.



DATE	1950
DRAWN BY	...
CHECKED BY	...
SCALE	...



DATE	10/10/10	SCALE	1/4" = 1'-0"
DRAWN BY	J. SMITH	CHECKED BY	M. JONES
PROJECT NAME		1234567890	
PROJECT ADDRESS		1234567890	
PROJECT CITY		1234567890	
PROJECT STATE		1234567890	
PROJECT ZIP		1234567890	
PROJECT PHONE		1234567890	
PROJECT FAX		1234567890	
PROJECT E-MAIL		1234567890	
PROJECT WEBSITE		1234567890	
PROJECT NOTES		1234567890	

